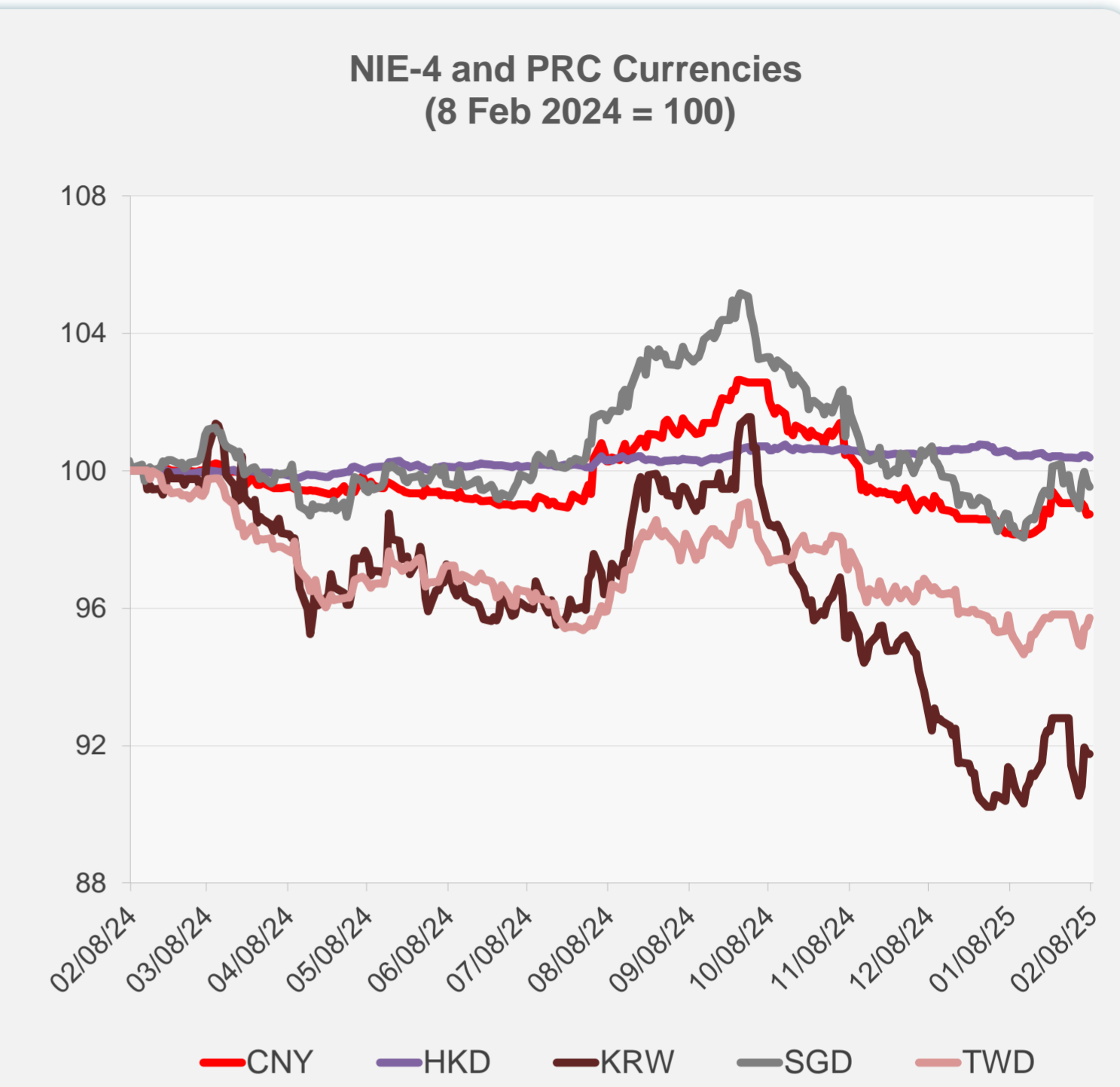
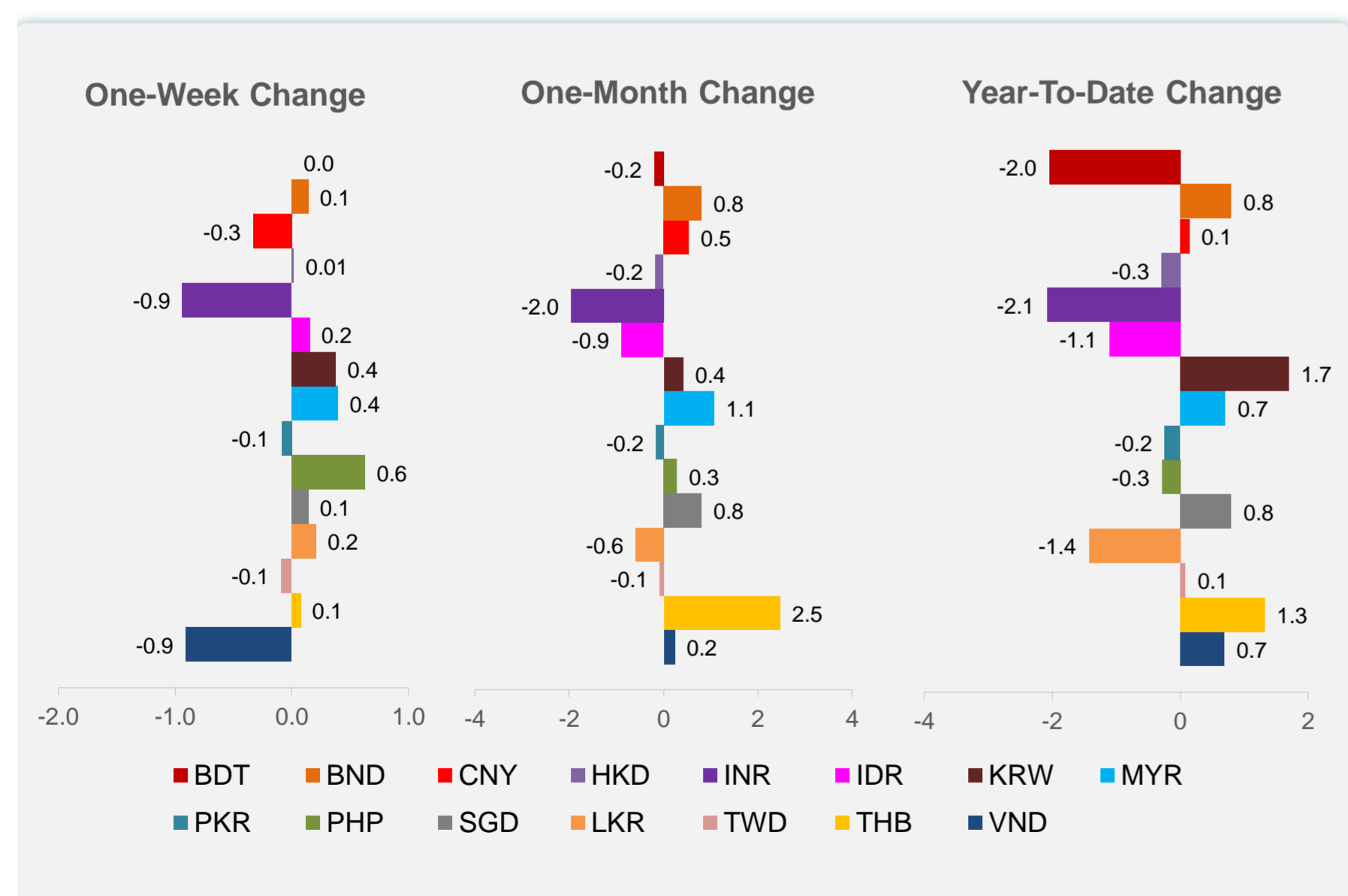
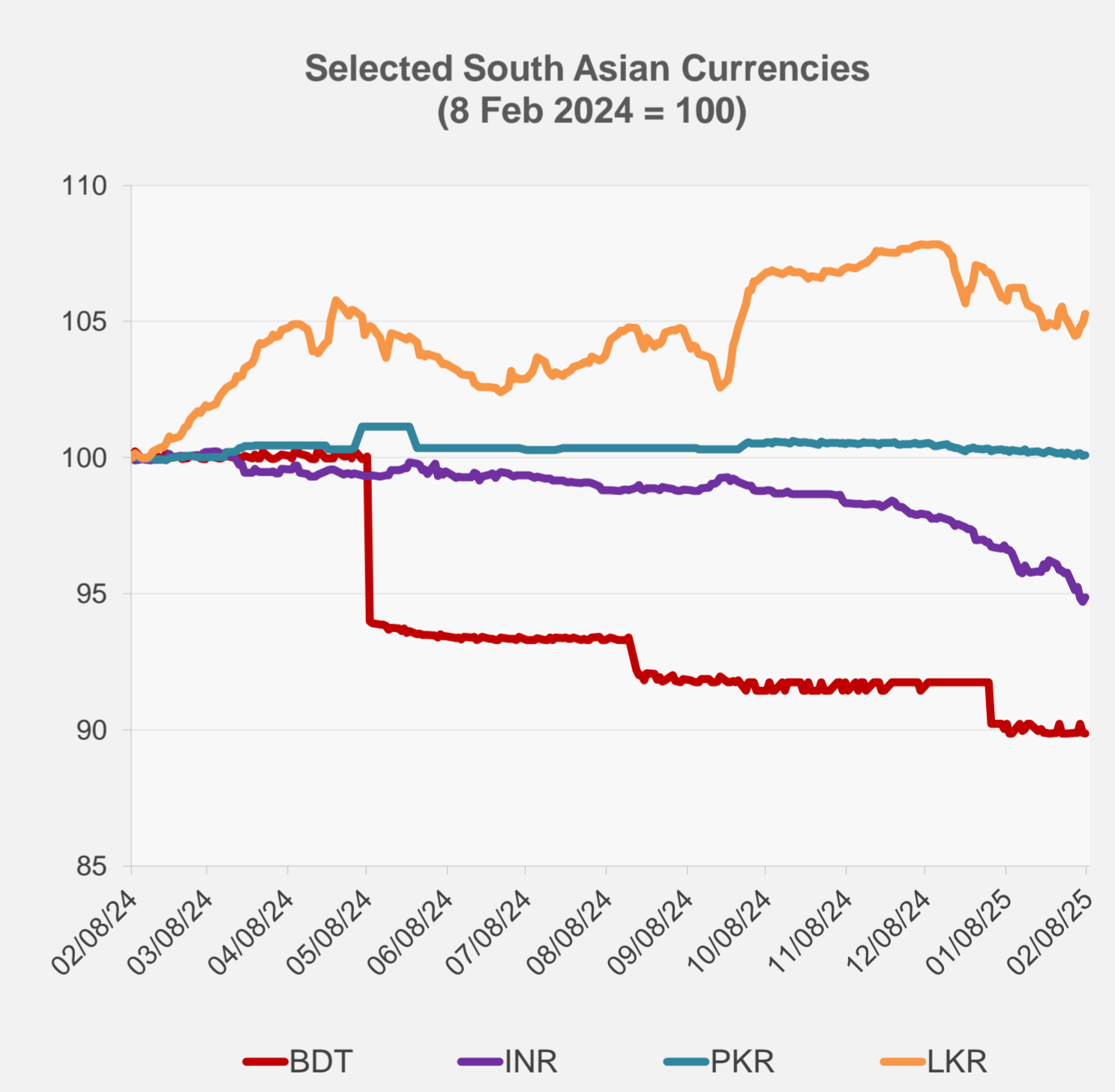
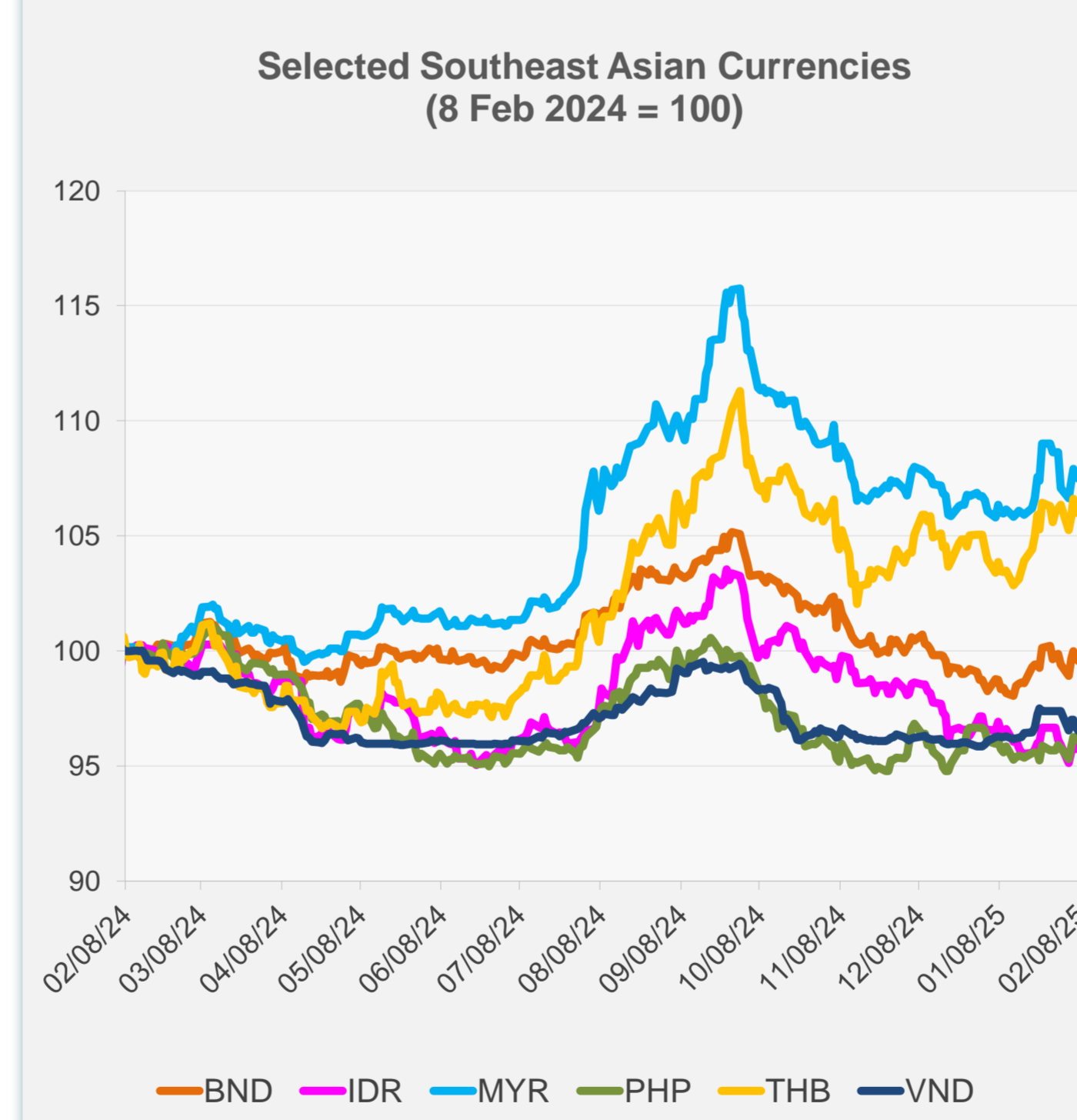


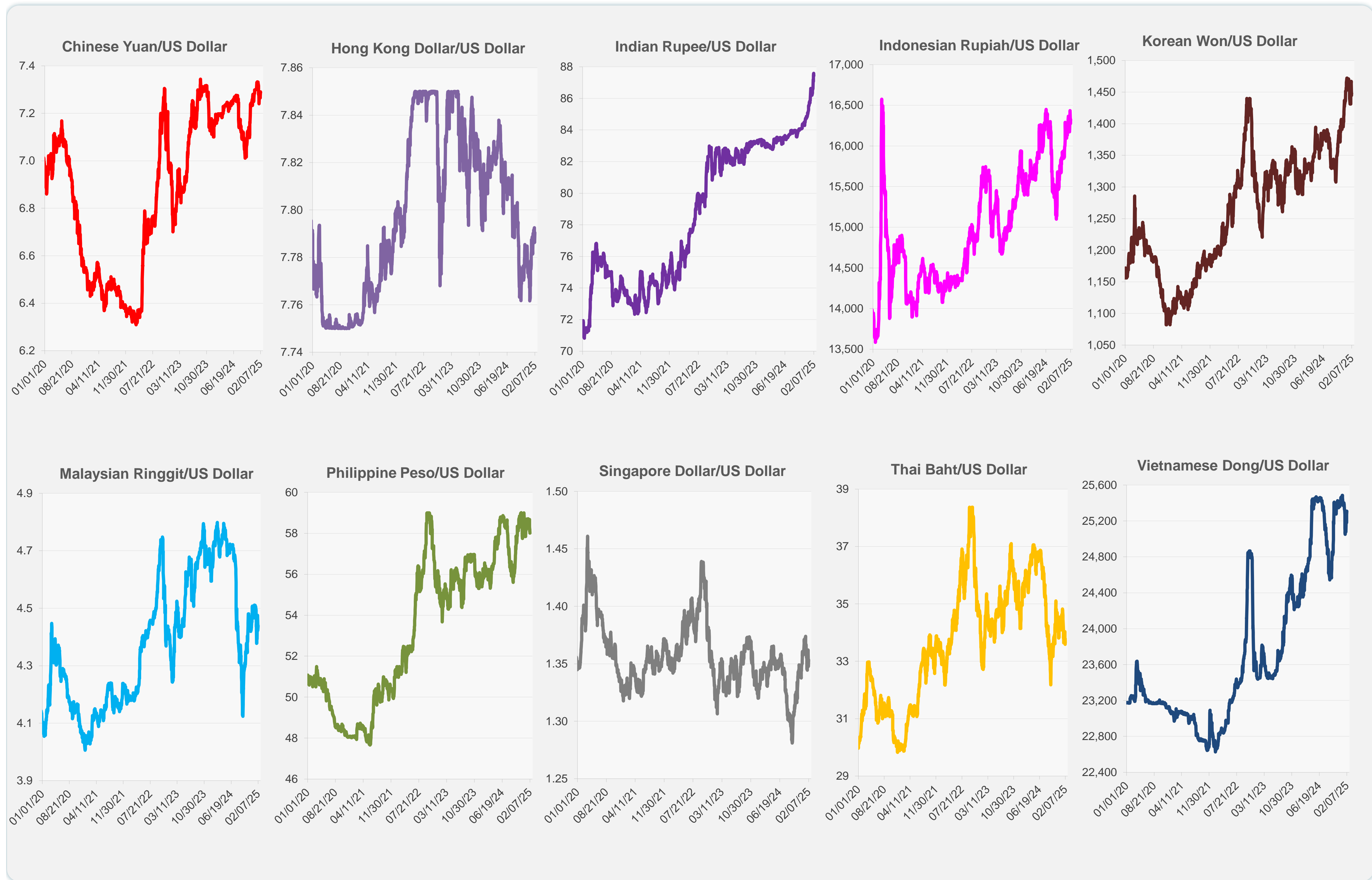
	Latest Closing	% change from Previous Day	% change from 01-Jan-25
Euro	0.97	-0.24	-0.10
Japanese yen (JPY)	151.39	0.20	3.81
Bangladeshi taka (BDT)	122.00	-0.04	-2.05
Brunei dollar (BND)	1.35	-0.13	0.80
Chinese yuan (CNY)	7.29	0.02	0.14
Hong Kong dollar (HKD)	7.79	-0.05	-0.29
Indian rupee (INR)	87.43	0.18	-2.08
Indonesian rupiah (IDR)	16,275.00	0.34	-1.11
Korean won (KRW)	1,447.55	-0.01	1.70
Malaysian ringgit (MYR)	4.44	-0.11	0.71
Pakistan rupee (PKR)	279.05	0.02	-0.24
Philippine peso (PHP)	58.01	0.31	-0.28
Singapore dollar (SGD)	1.35	-0.13	0.80
Sri Lanka rupee (LKR)	297.25	0.34	-1.43
Taipei,China NT dollar (TWD)	32.76	0.25	0.08
Thai baht (THB)	33.65	0.39	1.32
Vietnamese dong (VND)	25,310.00	-0.16	0.69



NIE = Newly Industrialized Economies



Note: Negative/Decreasing values indicate depreciation of local currency, and positive/increasing values indicate appreciation.  
Source: ADB calculations using data from Haver Analytics.



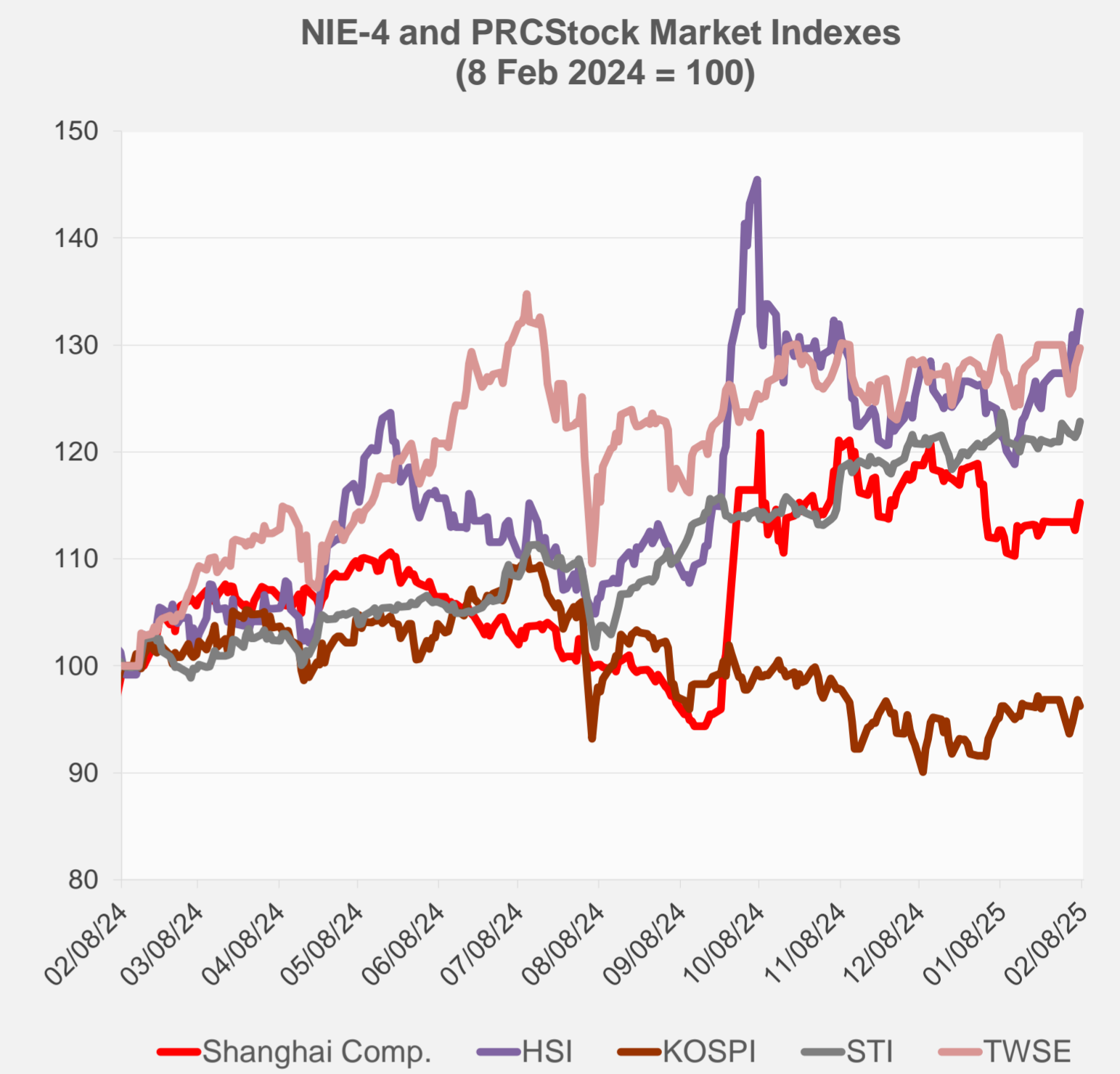
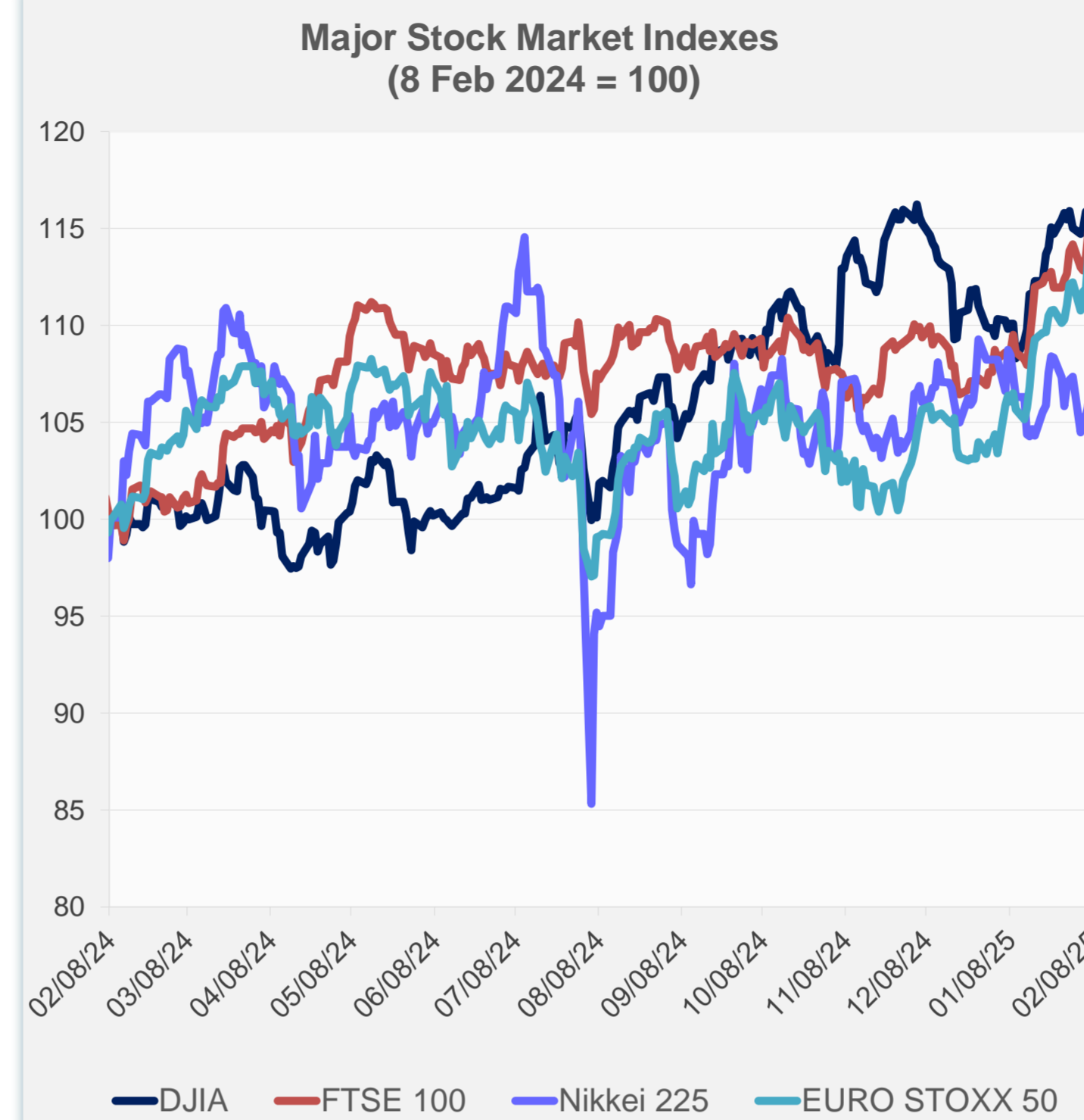
Source: Haver Analytics.



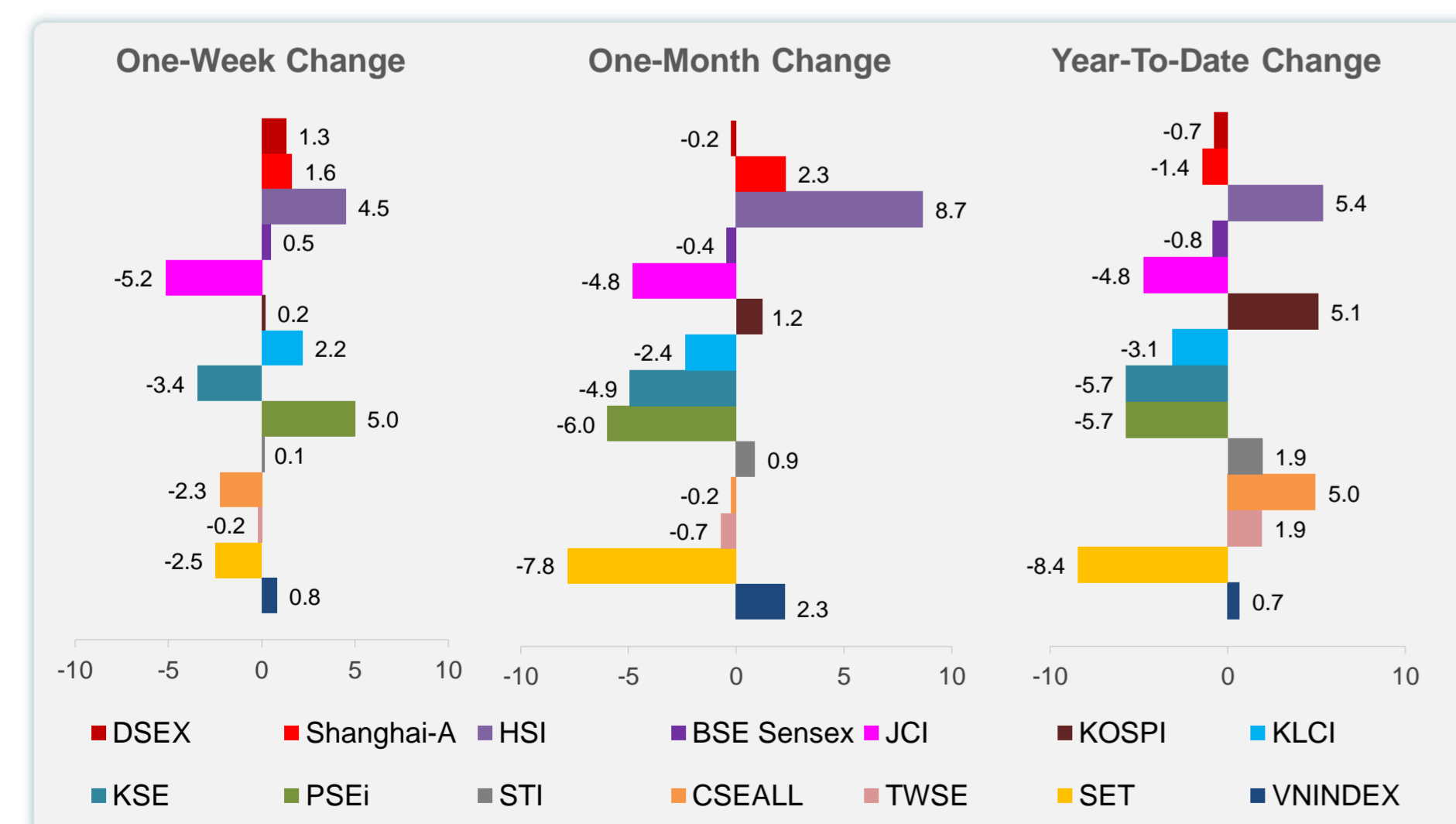
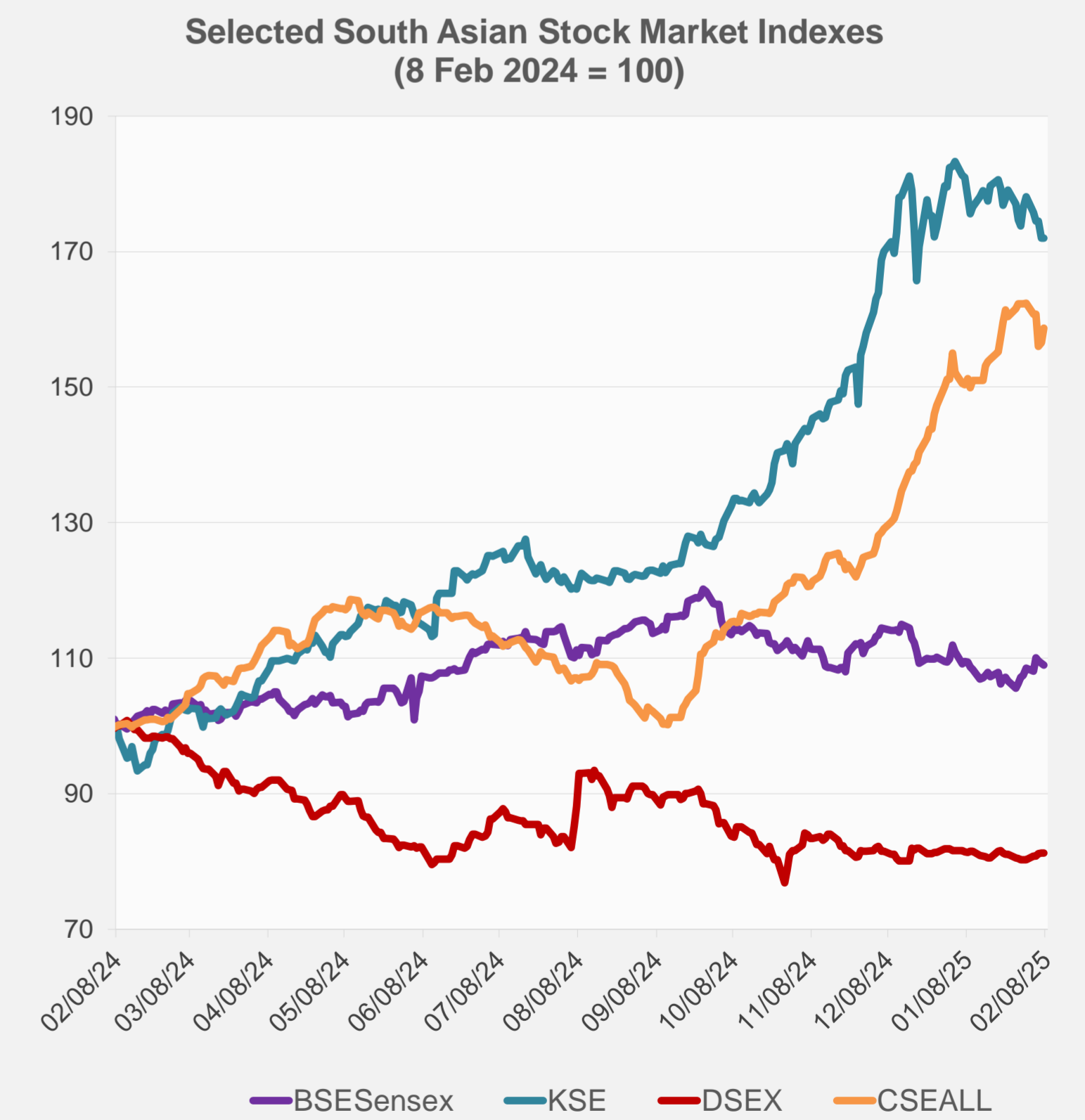
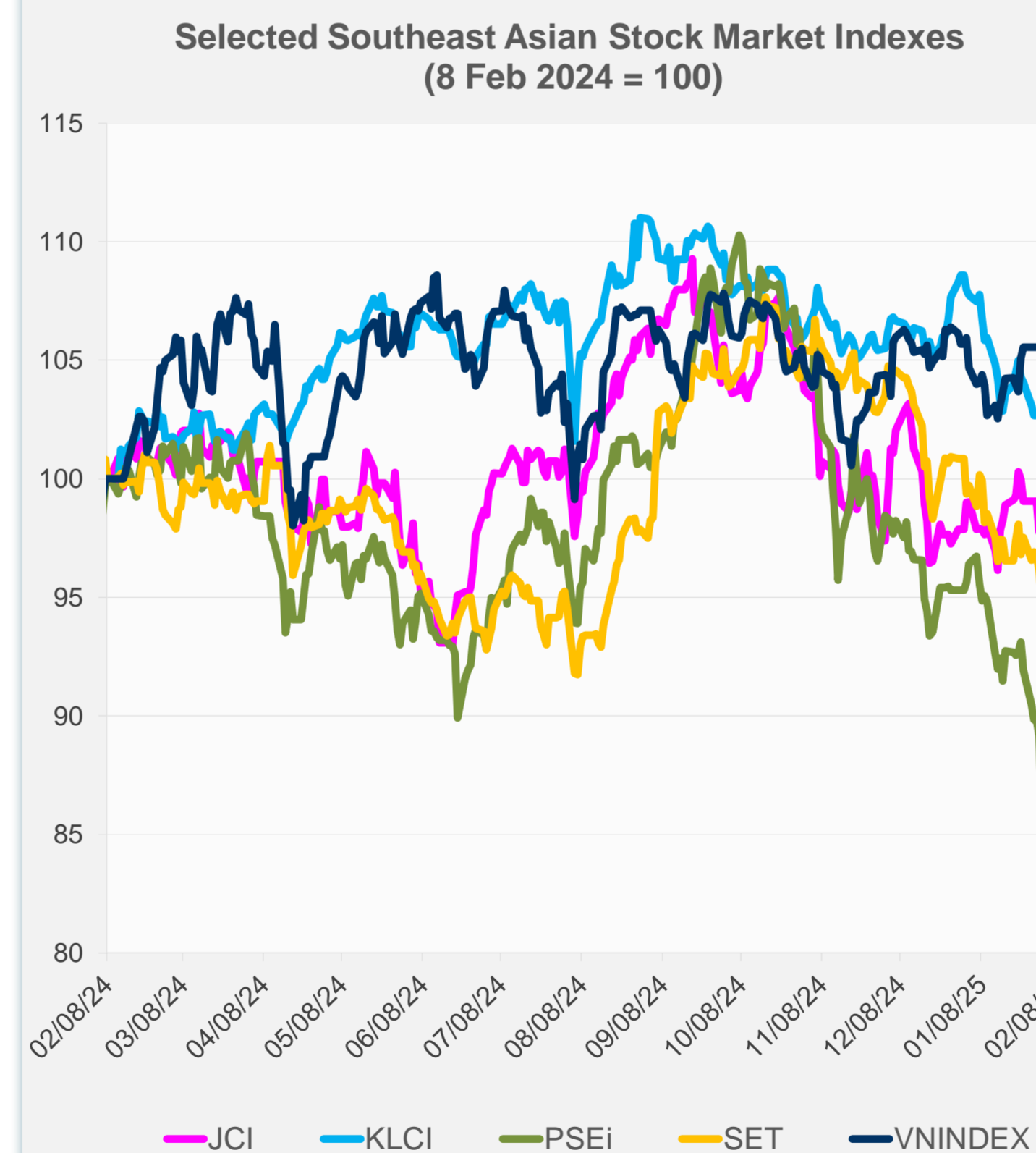
# Daily Market Watch STOCK INDEXES

10 February 2025, 9:00 AM Manila

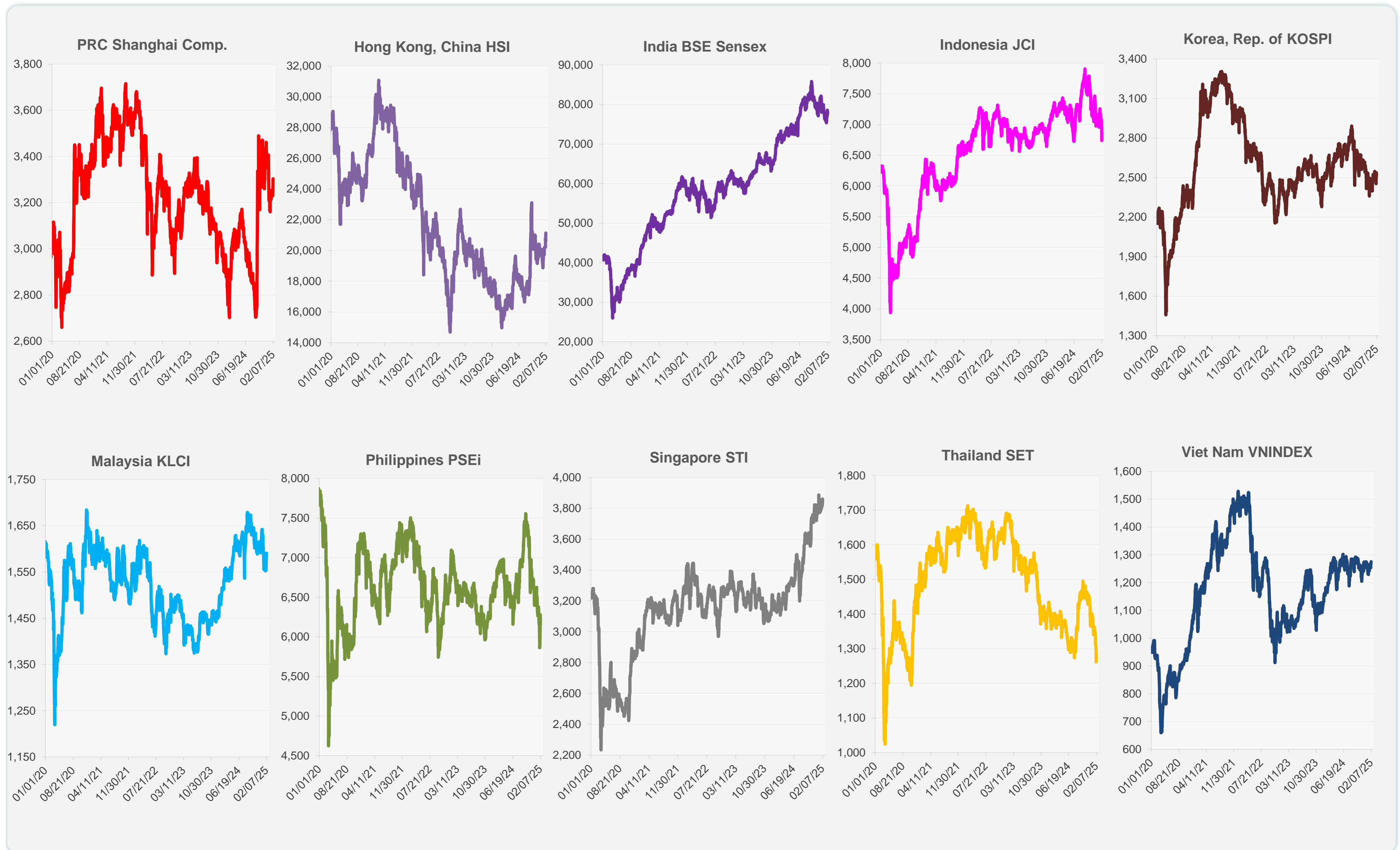
	Latest Closing	% change from Previous Day	% change from 01-Jan-25
US Dow Jones Ind Avg	44,303.40	-0.99	4.13
US NASDAQ	19,523.40	-1.36	1.10
US S&P 500	6,025.99	-0.95	2.45
UK FTSE 100	8,700.53	-0.31	6.45
EURO STOXX 50	5,325.40	-0.58	8.77
Japan NIKKEI 225	38,787.02	-0.72	-2.78
Bangladesh DSEX	5,179.18	0.00	-0.75
PRC Shanghai Comp.	3,303.67	1.01	-1.43
Hong Kong, China HSI	21,133.54	1.16	5.35
India BSE Sensex	77,860.19	-0.25	-0.82
Indonesia JCI	6,742.58	-1.93	-4.76
Korea, Rep. of KOSPI	2,521.92	-0.58	5.10
Malaysia KLCI	1,590.91	0.36	-3.13
Pakistan KSE 100	110,322.93	0.02	-5.71
Philippines PSEi	6,154.99	-1.39	-5.73
Singapore STI	3,861.42	0.81	1.95
Sri Lanka CSEALL	16,734.68	1.38	4.96
Taipei, China TWSE	23,478.27	0.69	1.92
Thailand SET	1,282.09	1.59	-8.44
Viet Nam VNINDEX	1,275.20	0.29	0.66



NIE = Newly Industrialized Economies



Sources: ADB calculations using data from CEIC Data Company and Haver Analytics.



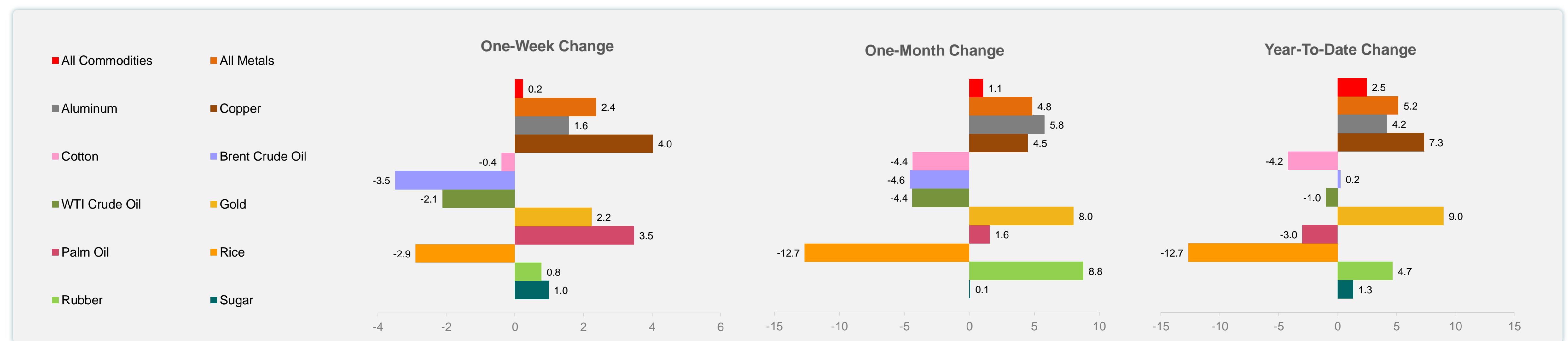
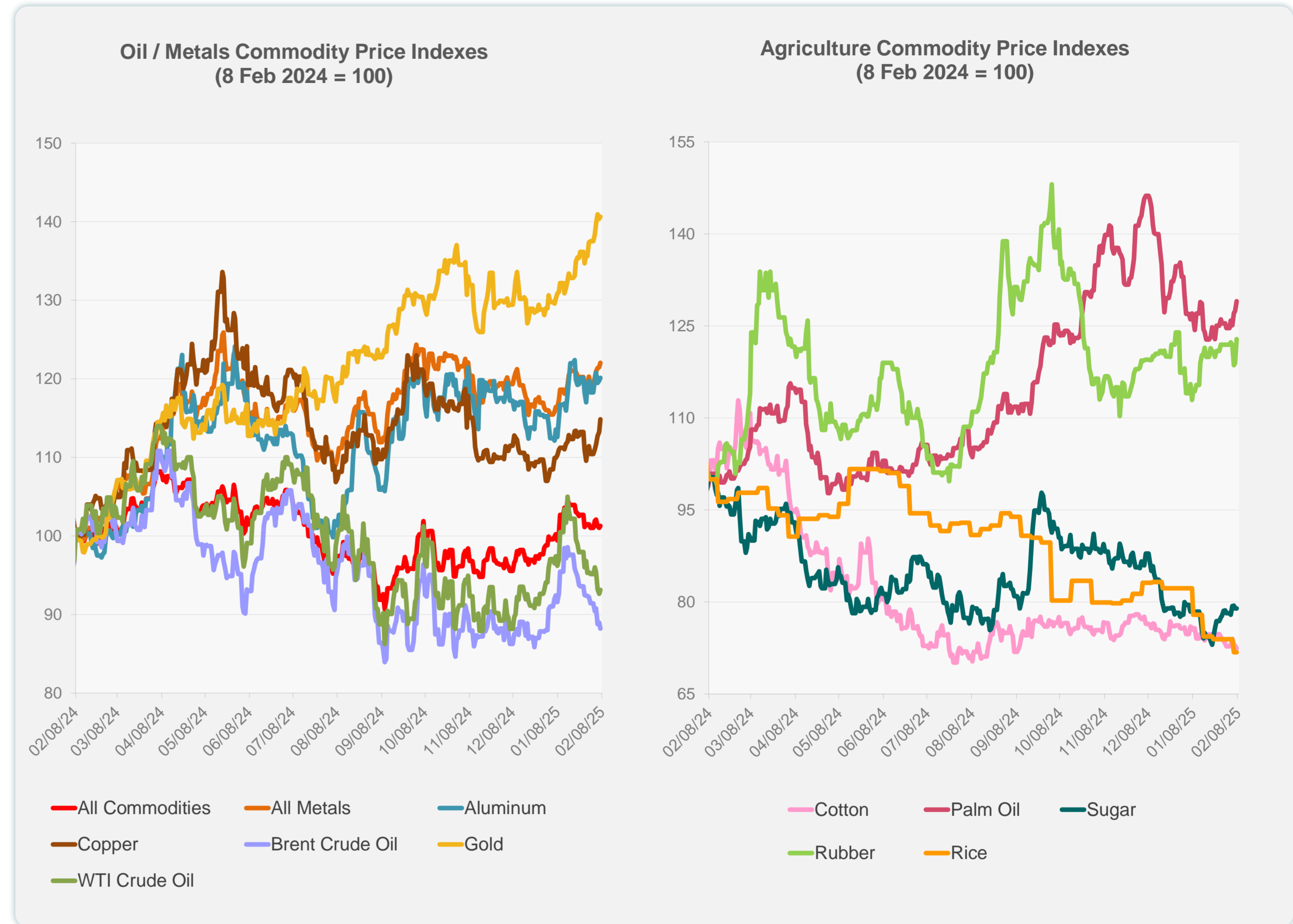
Sources: CEIC Data Company and Haver Analytics.



Daily Market Watch  
**COMMODITY PRICES**

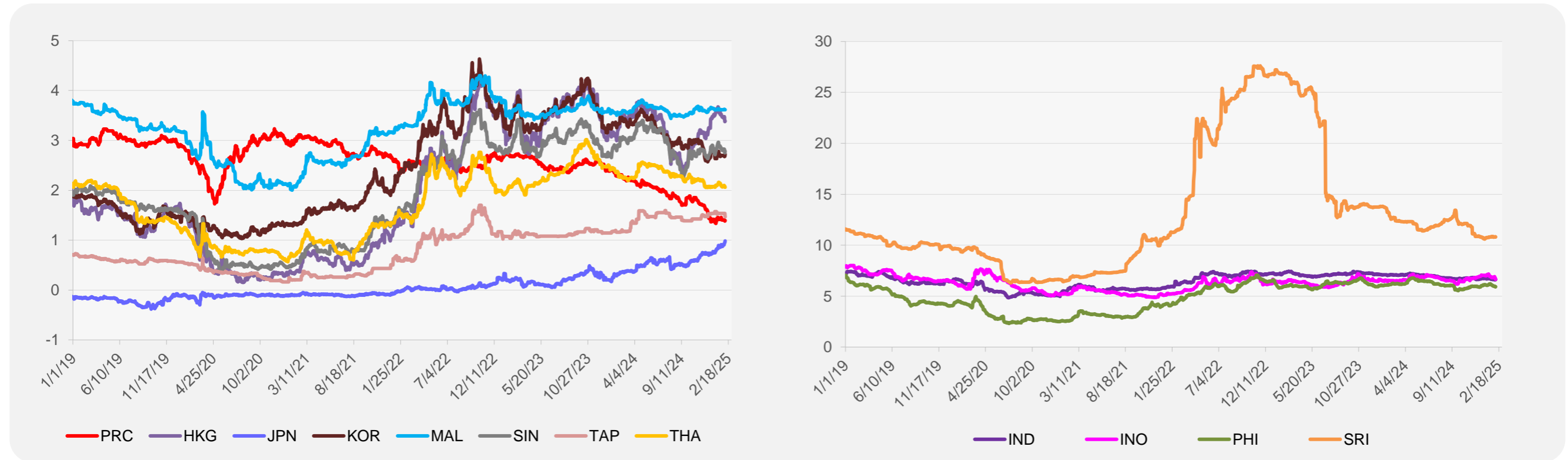
	Unit	Latest Closing	% change from Previous Day	% change from 01-Jan-25
S&P All Commodities	US\$	563.23	0.23	2.47
S&P All Metals	US\$	323.30	0.45	5.18
Aluminum	US\$/metric ton	2,632.87	0.29	4.20
Copper	US\$/metric ton	9,287.61	1.44	7.34
Cotton	US cents/lb	63.13	-0.63	-4.20
Brent Crude Oil	US\$/barrel	74.29	-0.81	0.25
WTI Crude Oil	US\$/barrel	71.00	0.55	-1.00
Gold	US\$/troy oz	2,861.07	0.17	9.01
Palm Oil	US\$/metric tonne	1,067.19	1.24	-2.99
Rice <sup>1</sup>	US\$/metric ton	469.00	0.00	-12.66
Rubber <sup>2</sup>	US\$/kg	247.90	3.33	4.69
Sugar	US cents/lb	18.44	0.00	1.32

<sup>1</sup> Latest closing price from 22 January 2025.  
<sup>2</sup> Singapore Exchange, Ribbed Smoked Sheet Rubber.

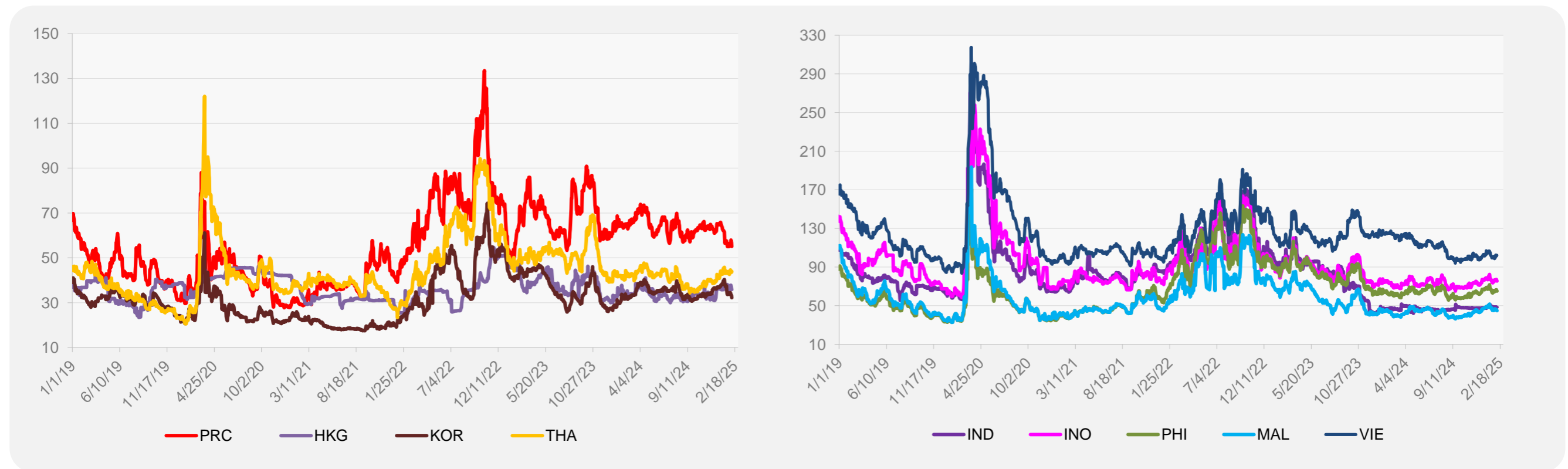


Source: ADB calculations using data from Bloomberg.

### 5-YEAR LOCAL CURRENCY GOVERNMENT BOND YIELDS (%)



### 5-YEAR CREDIT DEFAULT SWAP<sup>1</sup>



<sup>1</sup> In USD and based on sovereign bonds.  
Source: ADB calculations using data from Bloomberg.